

DIGITAL PRESSURE GAUGE OPERATION INSTRUCTION

SDPG32



Accessories : Cable x1



SDPG32-G



SDPG32-R

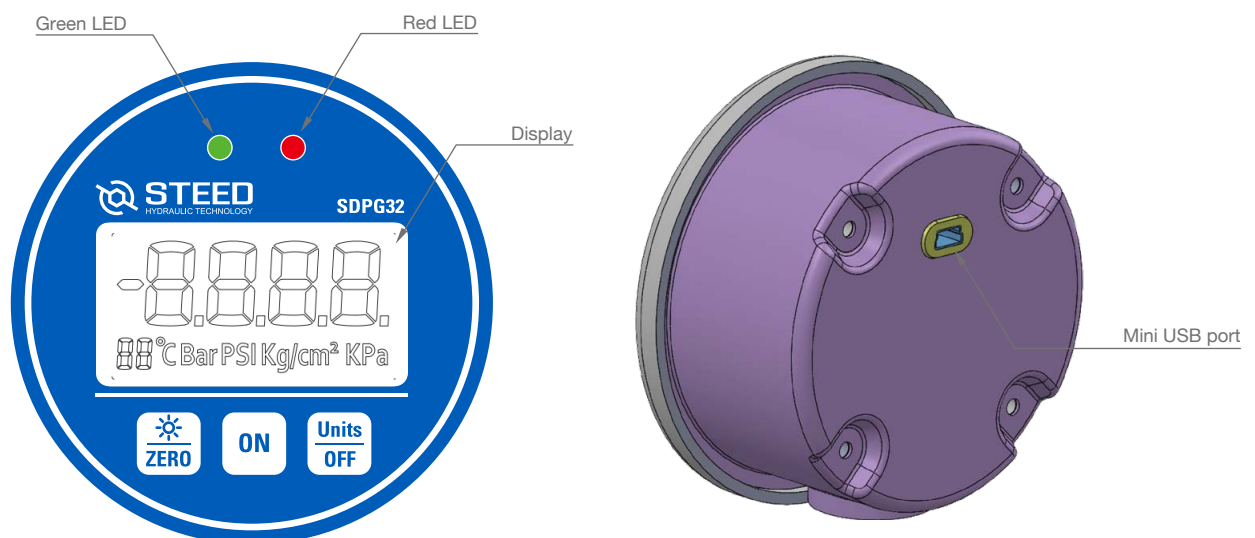
INTRODUCTION

SDPG32 series are the general purpose digital pressure gauge features following functions with datalogger capability :






1. 4 digits display with 4 pressure units selection which are Bar, PSI, Kg/cm² and MPa.
2. Built-in Lithium Battery provides more than 150 hours continuous operation time for a single recharge.
3. The long lasting internal lithium battery has more than 1000 recharge cycles which saves battery costs throughout whole service life.
4. Accuracy : 0.1% FS.
5. Max. 20% over pressure with warning.
6. A mini USB port is provided for both recharging and data transmitting.

OVERVIEW

1. Display : 4 digits , 4 units including minus sign.
2. Buttons : 3 buttons with complex functions.
3. LED : red and green LED indicating battery charging conditions.
4. Mini USB port in back bezel for battery recharging and data output.




OPERATING INSTRUCTIONS

1. ON : Press  key to turn on the gauge.
2. Unit selection : short press  key to select one unit from 4 units.
3. OFF : long press  to turn off the gauge.
4. SDPG32 series will enter sleep mode when the applied pressure does not change for 15 min.
5. ZERO: Long press  key to reset the display.
6. Back light: Short press  key to turn on the back light. The back light will turn off automatically after 15 sec.

STARTUP DISPLAY

The display will show 9999 and countdown to 1111 and display the maximum measuring pressure range (in Bar unit) briefly then display the initial value.

If the initial value is not zero, long press  for zeroing.

OVER PRESSURE RANGE WARNING

The display will flash for warning as long as the applied pressure goes over the maximum pressure range.

The display will turn off automatically when the applied pressure exceeds more than 20% of the maximum pressure range.

LOW BATTERY WARNING

The display will flash for warning when the battery voltage goes below to 3V.

The display will turn off automatically when the battery voltage goes below 2.7V.

RECHARGING THE INTERNAL BATTERY

An internal built-in 18650 Li battery provides the long working hours.

Recharging the battery is required as the display warning is shown up.

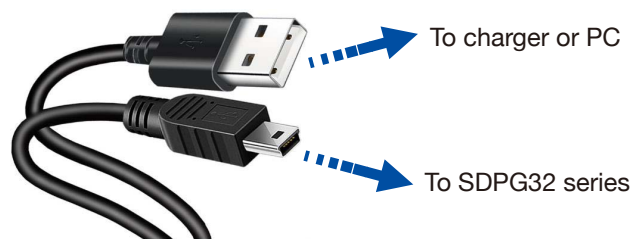
Any mobile phone charger which could provide more than 5V, 0.5A can be used. The attached cable has USB and Mini USB connectors on both ends.

The red LED will light up when the charger is connected. The green LED will illuminate as the battery is fully charged. It takes about 6 hours to fully recharge the battery and lasts more than 150 hours for continuous operation.

DATALOGGER

The recharging cable can be used as a data line when USB end is plugged to PC.

SDPG32 series will output pressure data to the computer through datalogger software.



MAINTENANCE

SDPG32 series are maintenance-free and only cosmetic cleaning is required. Use only alcohols to wipe the exterior of the gauge. Other solvents like acetone or toluene is prohibited.